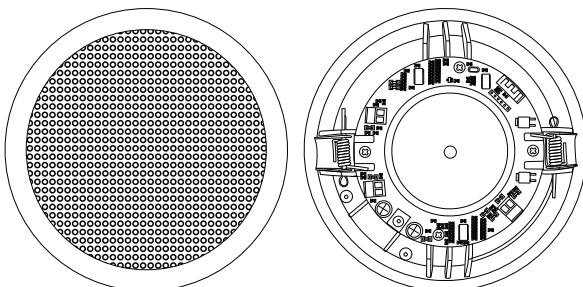


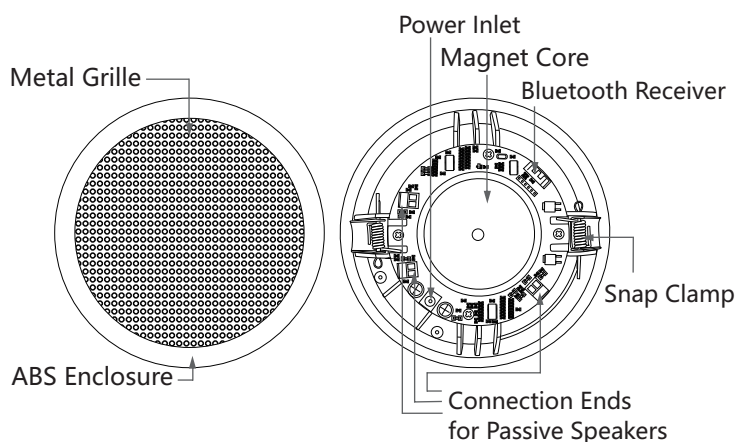


BLUETOOTH ACTIVE CEILING SPEAKER

WS-301BT/WS-302BT/WS-304BT



Product Details:



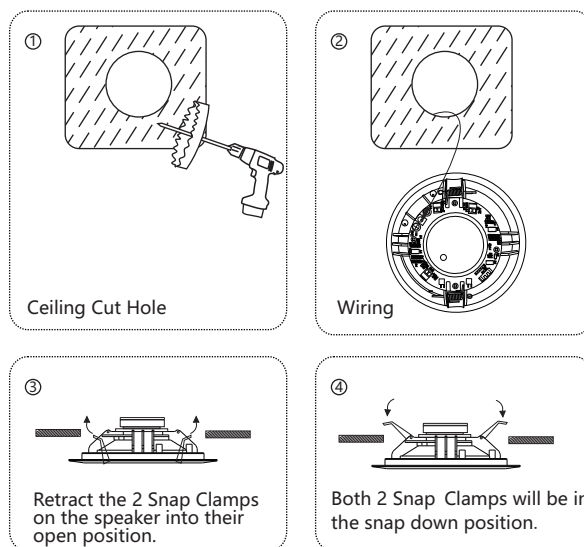
Features:

- Solution of stereo wireless Bluetooth transmission, the adoption of BK8000L BEKEN chip module with high-quality sound quality and compatibility;
- AC100V~AC240V power supply with adapter;
- Transmission distance 10 meters;
- Digital Class D amplifier;
- Full-range 5.25", 10W dual-cone dynamic speaker;
- Frame-mounted spring-loaded clamps provide secure, low-noise connections and easy installation;
- Attractive color ABS resin finish with white grille suits any decor.

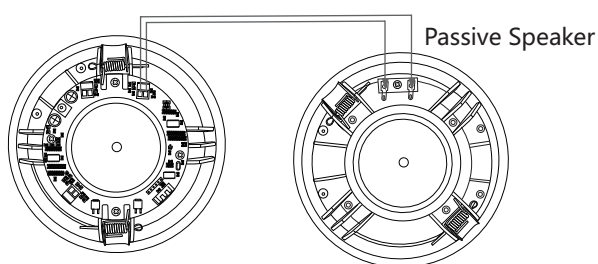
Specifications:

Rated power: 2CH amplifier 2*10W & 4CH amplifier 4*10W;
 Frq. Response: 120Hz-15KHz ($\pm 3\text{dB}$) ;
 THD: <0.05% at 1kHz, 1/3 rated power
 S/N: >70dB;
 Protocols: HFPV1.5, A2DPV1.2, AVRCPV1.4,
 HSP1.2, GA VDP1.2, IOP;
 Speaker unit: full range 5.25"*1;
 Power Consumption: 2CH(25W), 4CH(50W);
 Installation: in ceiling;
 Finish : white; baffle & Enclosure: ABS resin,
 grille & mounting hardware steel alloy;
 Power supply: adapter AC100V~AC240V $\pm 10\%$ 50-60Hz;
 Dimension: $\Phi 188*76$;
 Cutting hole: $\Phi 170$;
 Gross weight: 2CH(1.75Kg) , 4CH(3.5Kg);

Installation:



Connection:

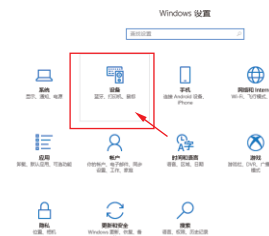
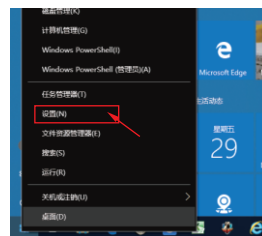


Note: the other passive speakers are connected to corresponding outlets in the same way!

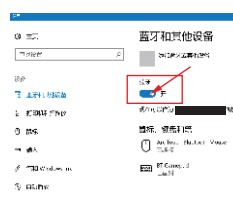
Mobile Phone Connection:

1. Open Bluetooth of mobile phone.
 2. "BGM SYSTEM" will be shown then click to connect it.
- Note: the pairing password is **1688**.

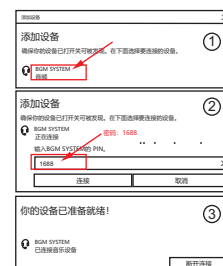
Computer Connection :



1. Enter the "SETTING" of "START" menu.



2. Enter the "SETTING" menu.



3. Open "Bluetooth".

4. Make connection.

Note: please prepare separate Bluetooth adapter if computer does not have one built-in!